

4

3

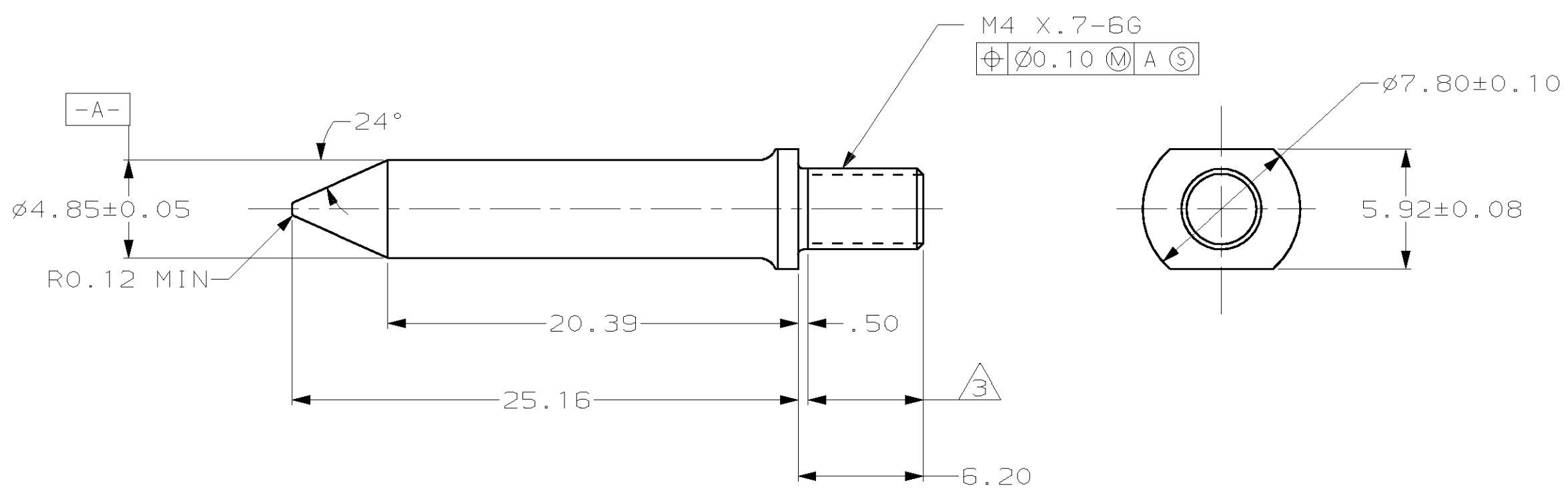
2

1

THIS DRAWING IS UNPUBLISHED. RELEASED FOR PUBLICATION ,19 .  
 © COPYRIGHT 19 BY AMP INCORPORATED. ALL RIGHTS RESERVED.

| LOC | DIST | REVISIONS   |                             |         |       |
|-----|------|-------------|-----------------------------|---------|-------|
| P   | LTR  | DESCRIPTION | DATE                        | DWN     | APVD  |
| AD  | 47   | E           | REVISE PER ECN 0U1B-0384-00 | 12FEB01 | SU RP |

- ① MATERIAL: STAINLESS STEEL.
- ② FINISH: PASSIVATE.
- ③ LOCTITE DRI-LOC 204 APPLIED IN THIS AREA.
- 4. RECOMMENDED P.C. BOARD DRILLED HOLE DIAMETER IS 4.10±0.08mm IF APPLYING A NUT FROM THE REAR OF THE BOARD. IF USING WITH PEM NUT P/N KFS2-M4, DRILLED HOLE DIAMETER SHOULD BE 6.4±0.08mm.



223956-1  
PART NUMBER

|  |  |                                    |   |                 |
|--|--|------------------------------------|---|-----------------|
| THIS DRAWING IS A CONTROLLED DOCUMENT.                                       |  | DWN<br>R. BUCHHEISTER<br>25/JAN/95 | AMP Incorporated<br>Harrisburg, PA 17105-3608 |                 |
| DIMENSIONS:<br>mm  |  | CHK<br>D. ZITSCH<br>25/JAN/95      |   |                 |
| TOLERANCES UNLESS OTHERWISE SPECIFIED:                                       |  | APVD<br>D. SINISI<br>25/JAN/95     | NAME  |                 |
| 0 PLC ±-<br>1 PLC ±-<br>2 PLC ±0.13<br>3 PLC ±-<br>4 PLC ±-<br>ANGLES ±0°30' |  | PRODUCT SPEC                       | GUIDE PIN,<br>UNIVERSAL POWER MODULE          |                 |
| MATERIAL ①   |  | FINISH ②③                          | APPLICATION SPEC                              | RESTRICTED TO   |
|  |  | WEIGHT -                           | SIZE A3                                       | CAGE CODE 00779 |
|  |  | CUSTOMER DRAWING                   | DRAWING NO C- 223956                          | SCALE 4:1       |
|  |  |                                    | SHEET 1 OF 1                                  | REV E           |